

A photograph of a Bog Turtle resting on a bed of wood chips. The turtle is dark-colored with a lighter patch on its head. The background is a blurred natural setting.

Habitat Conservation Banking for Bog Turtle in Southeastern Pennsylvania

Protecting Bog Turtle Habitat
Through Local Conservation

Derald J. Hay, Esq.,
Fox Rothschild LLP

For Question, contact Derald Hay
at dhay@foxrothschild.com

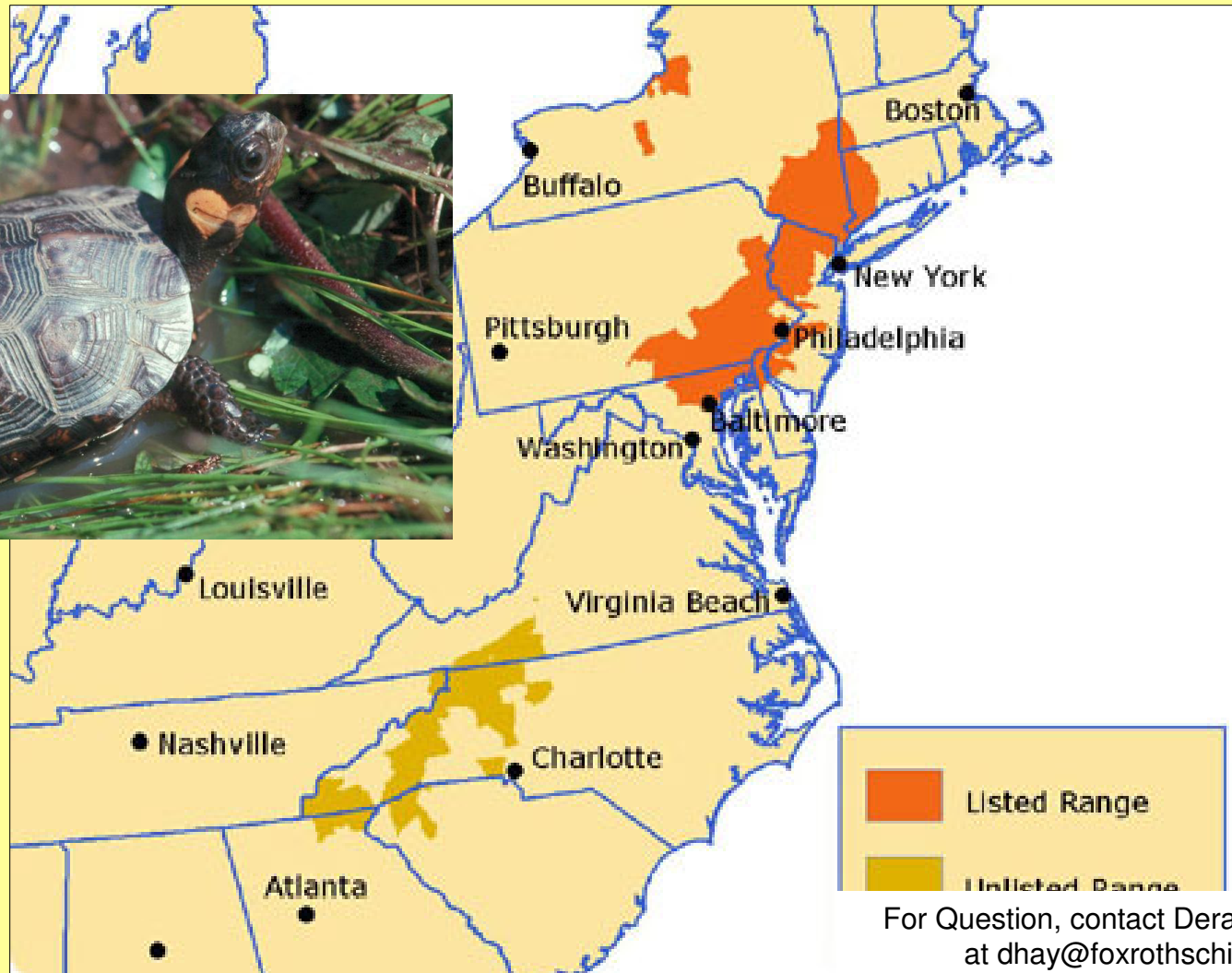
Bog Turtle Habitat Conservation Banking Overview

- The Bog Turtle
- Habitat & Pressures
- The Banking Process

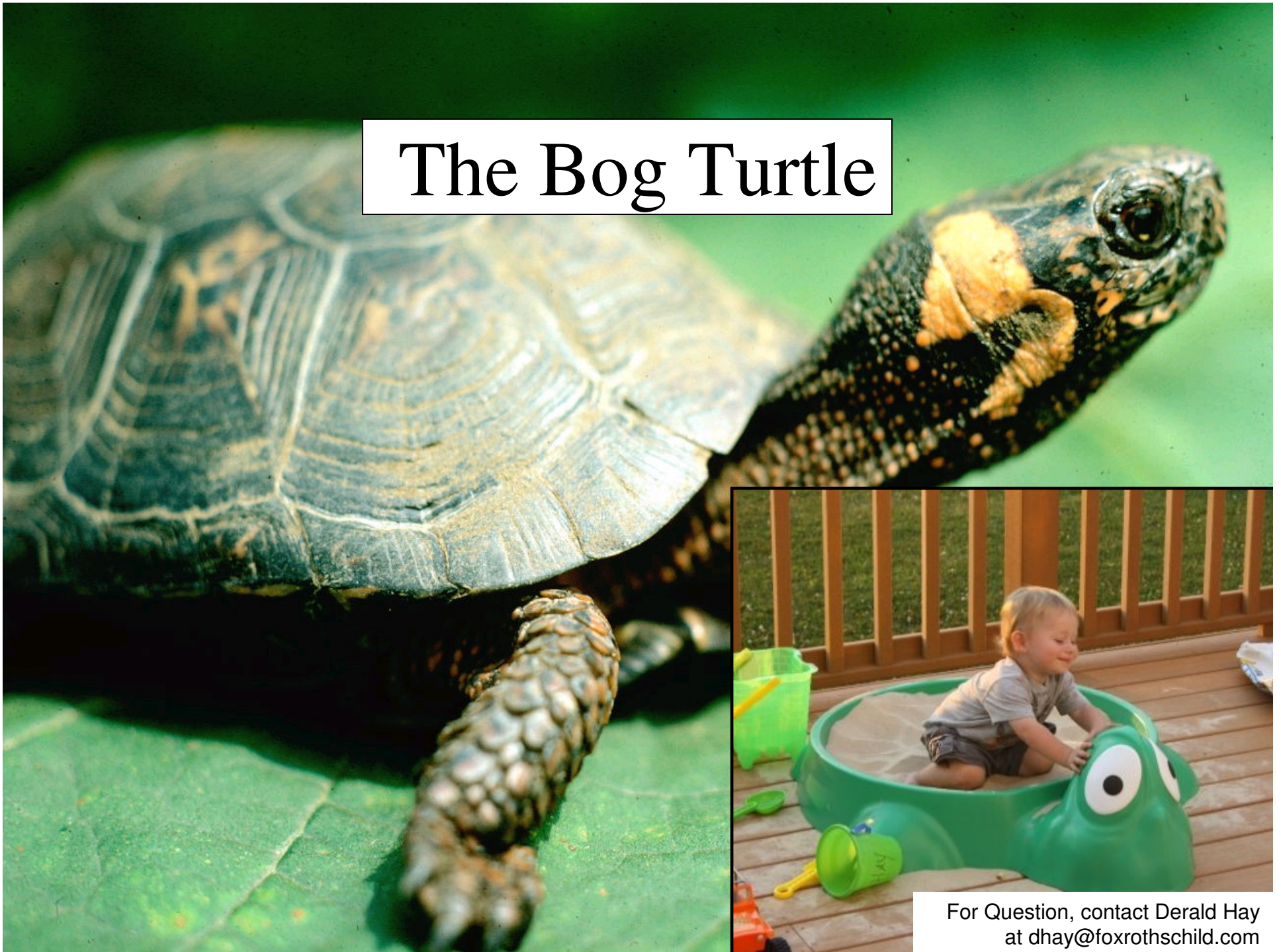


For Question, contact Derald Hay
at dhay@foxrothschild.com

Bog Turtle Range



The Bog Turtle



For Question, contact Derald Hay
at dhay@foxrothschild.com



Bog Turtle Habitat – Tussocks Sedges Wetlands

Thick Protective cover
Insulation for hatchlings
Thick mat to burrow

For Question, contact Derald Hay
at dhay@foxrothschild.com

Maintaining Bog Turtle Habitat



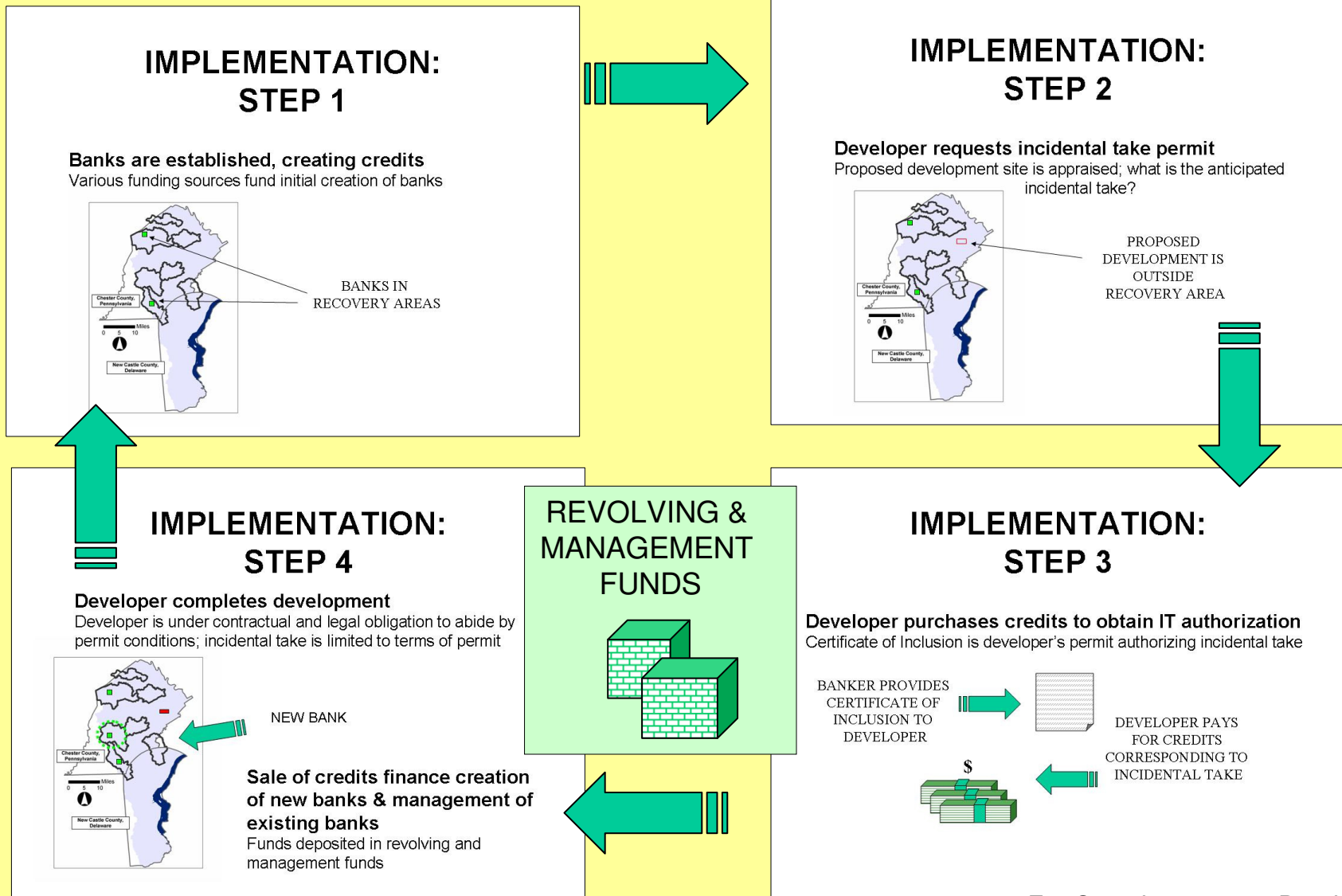
For Question, contact Derald Hay
at dhay@foxrothschild.com

Pressures on the Bog Turtle



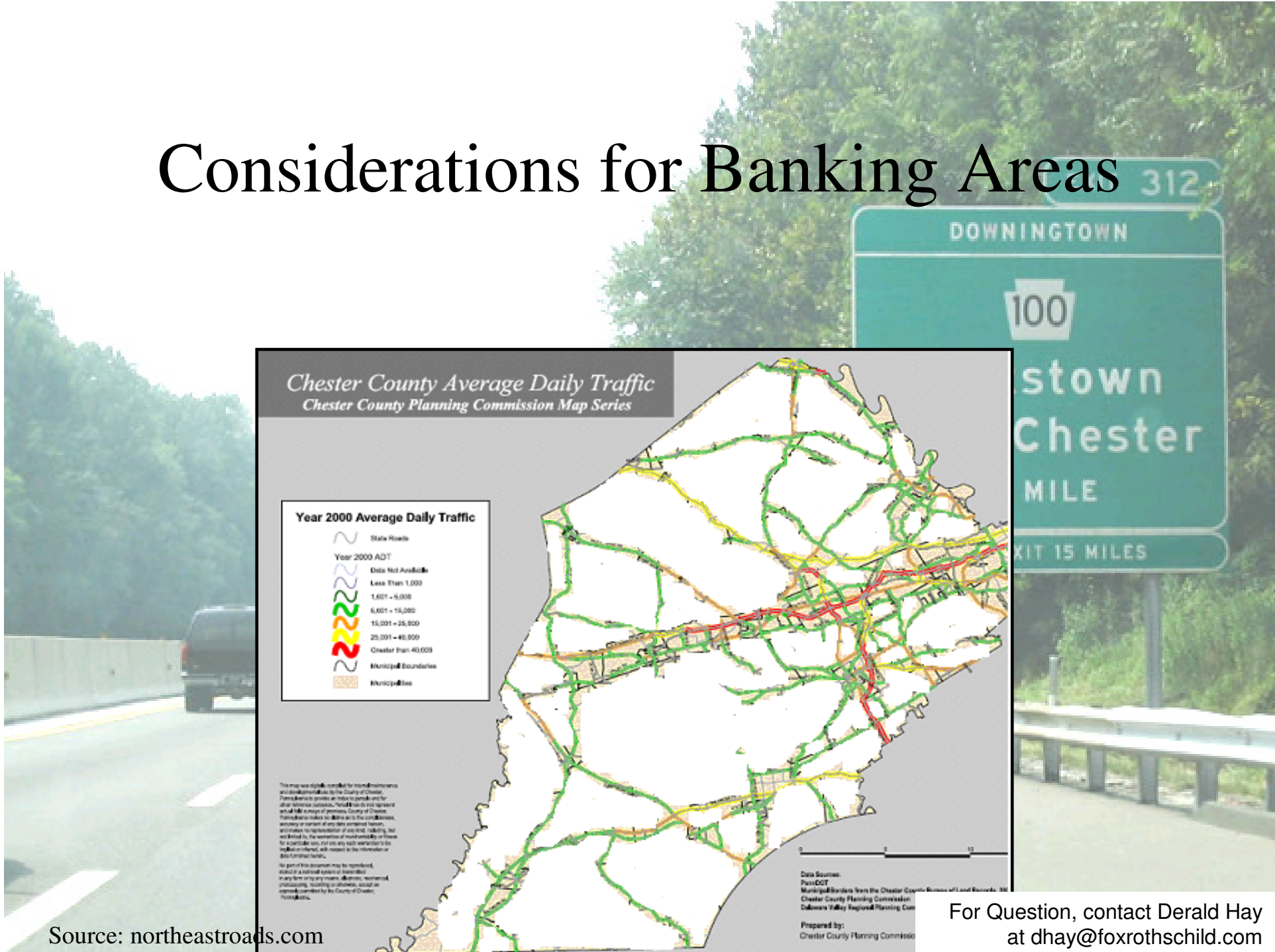
(c) Jim F

Implementation Cycle



For Question, contact Derald Hay
at dhay@foxrothschild.com

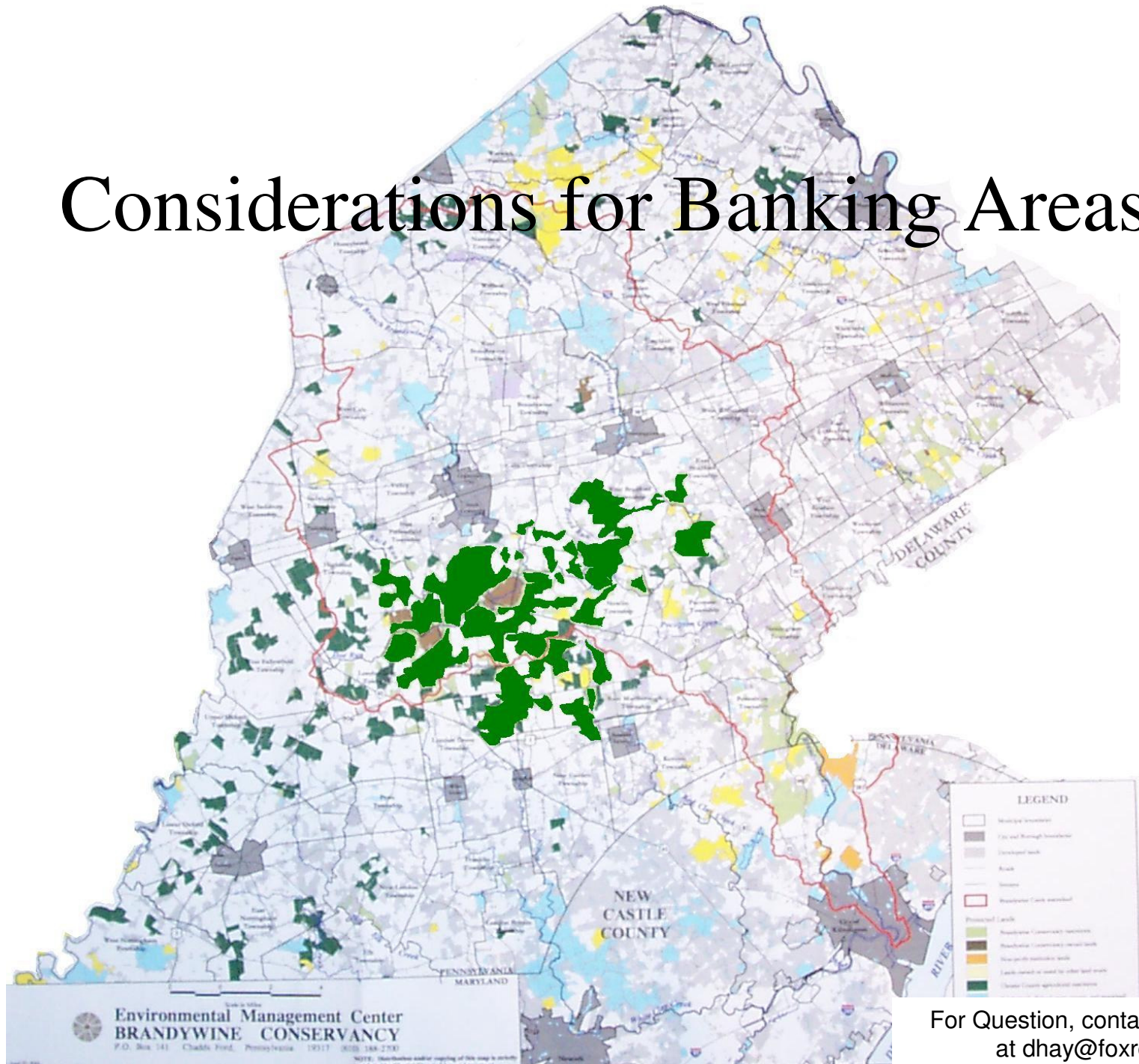
Considerations for Banking Areas



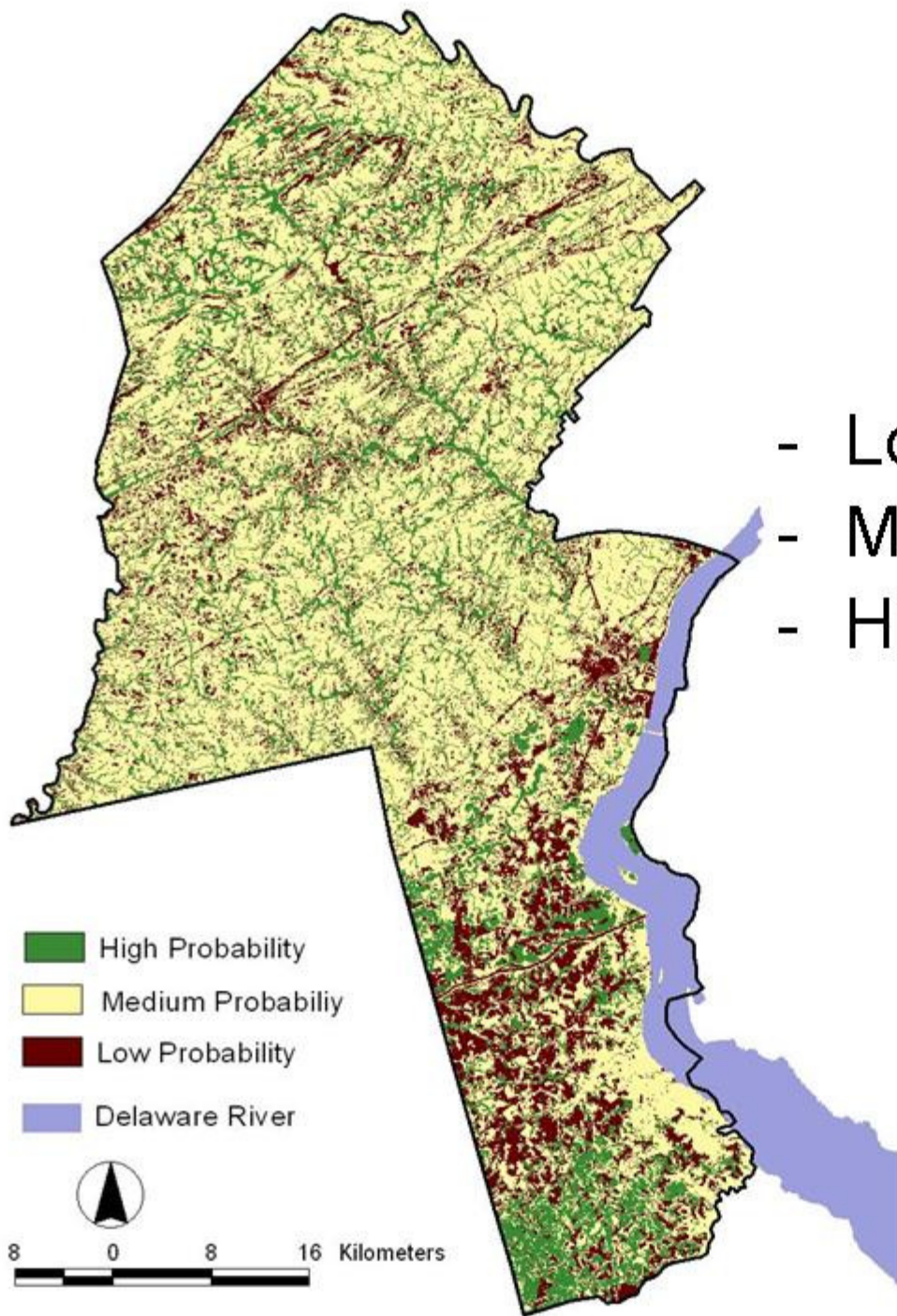
Source: northeastroads.com

For Question, contact Derald Hay at dhay@foxrothschild.com

Considerations for Banking Areas



For Question, contact Derald Hay
at dhay@foxrothschild.com



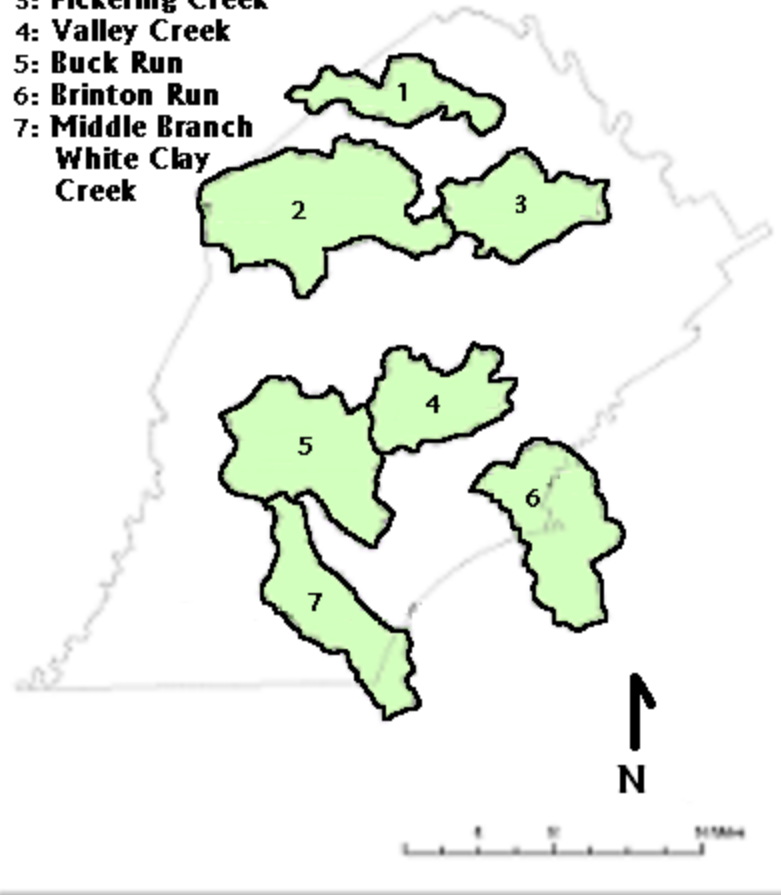
- Low Probability- 18%
- Medium Probability- 63%
- High Probability- 19%

For Question, contact Derald Hay
at dhay@foxrothschild.com

Bog Turtle Recovery Areas

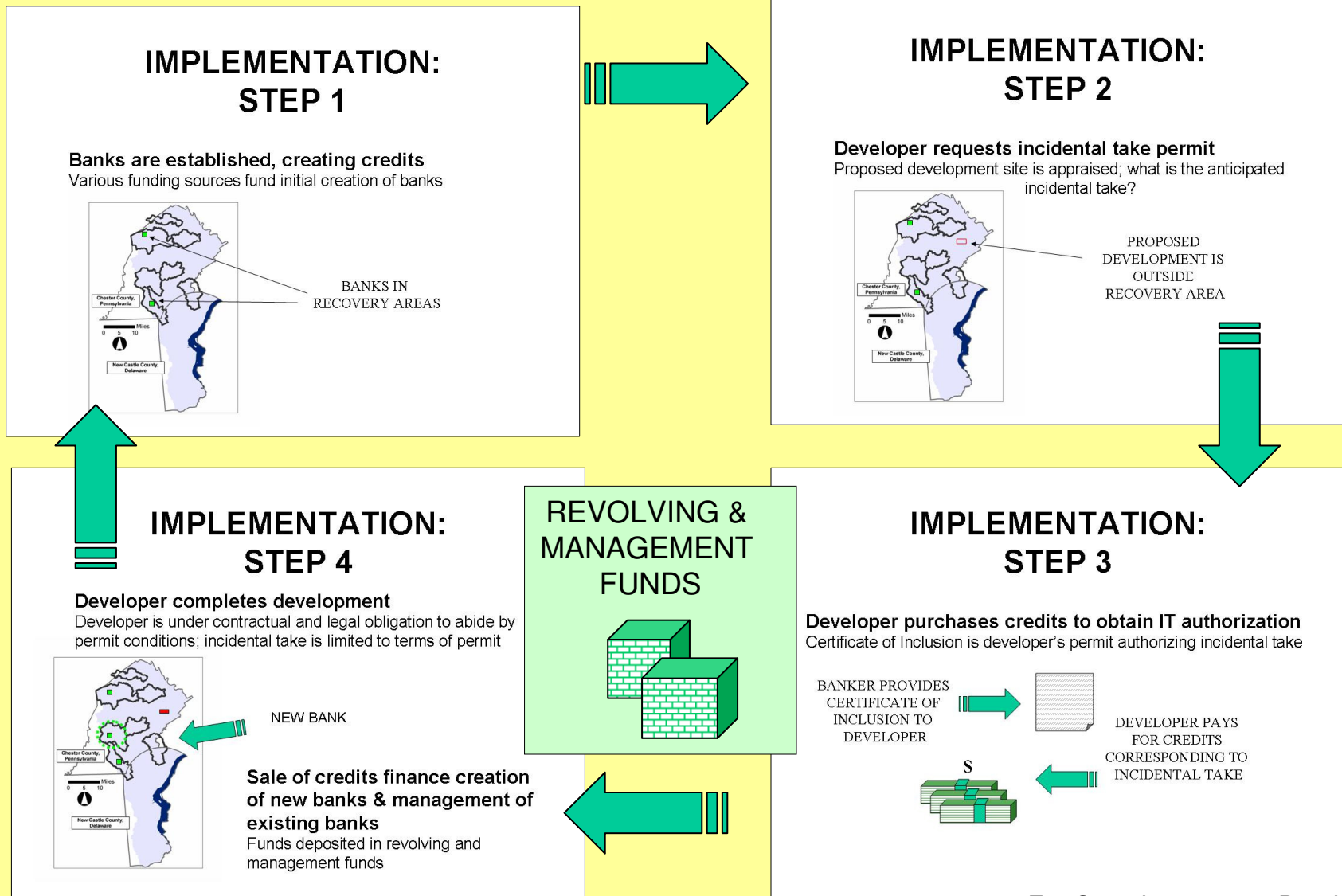
Recovery Areas

- 1: French Creek
- 2: E. Branch of the Brandywine
- 3: Pickering Creek
- 4: Valley Creek
- 5: Buck Run
- 6: Brinton Run
- 7: Middle Branch White Clay Creek



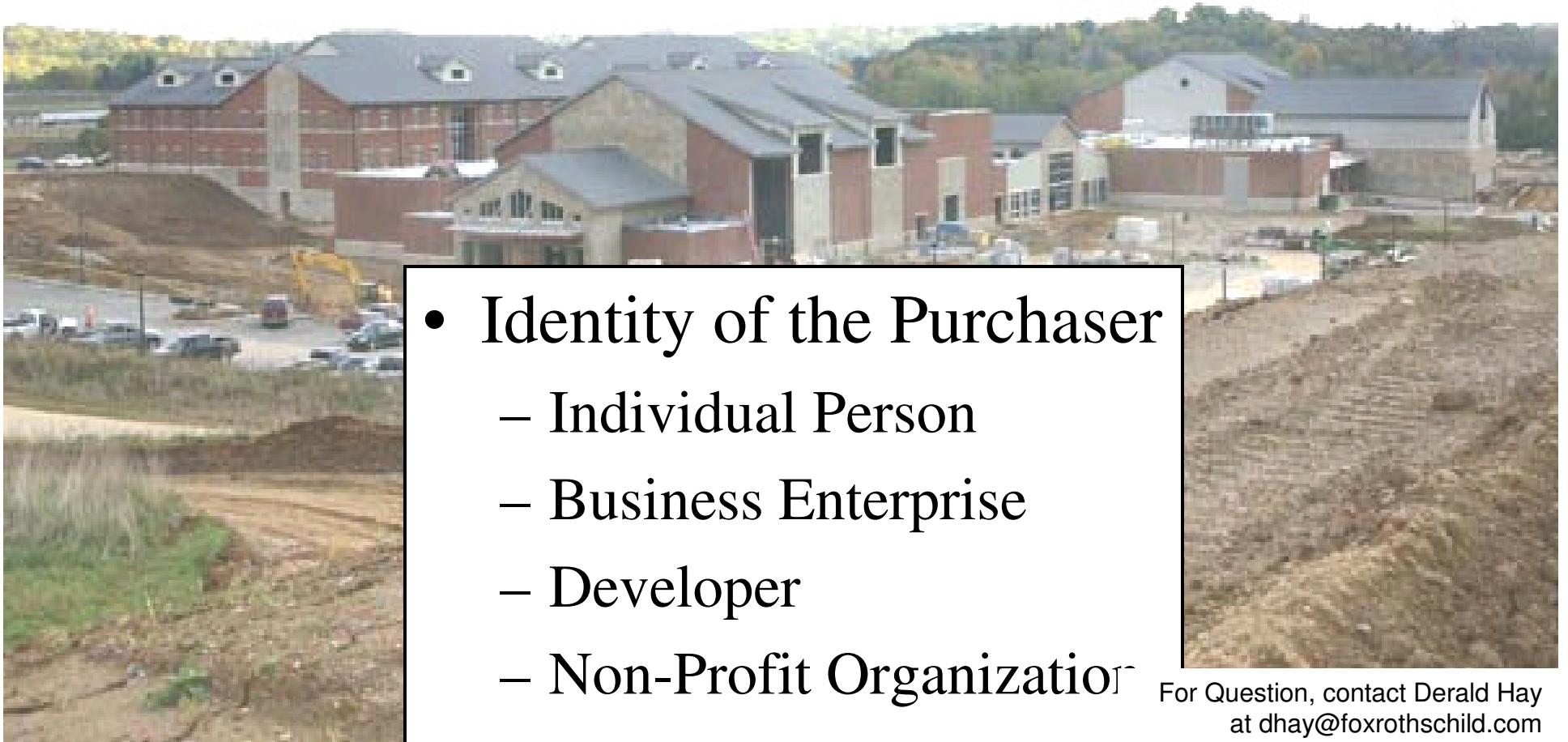
For Question, contact Derald Hay
at dhay@foxrothschild.com

Implementation Cycle



For Question, contact Derald Hay
at dhay@foxrothschild.com

Considerations for Banking Areas

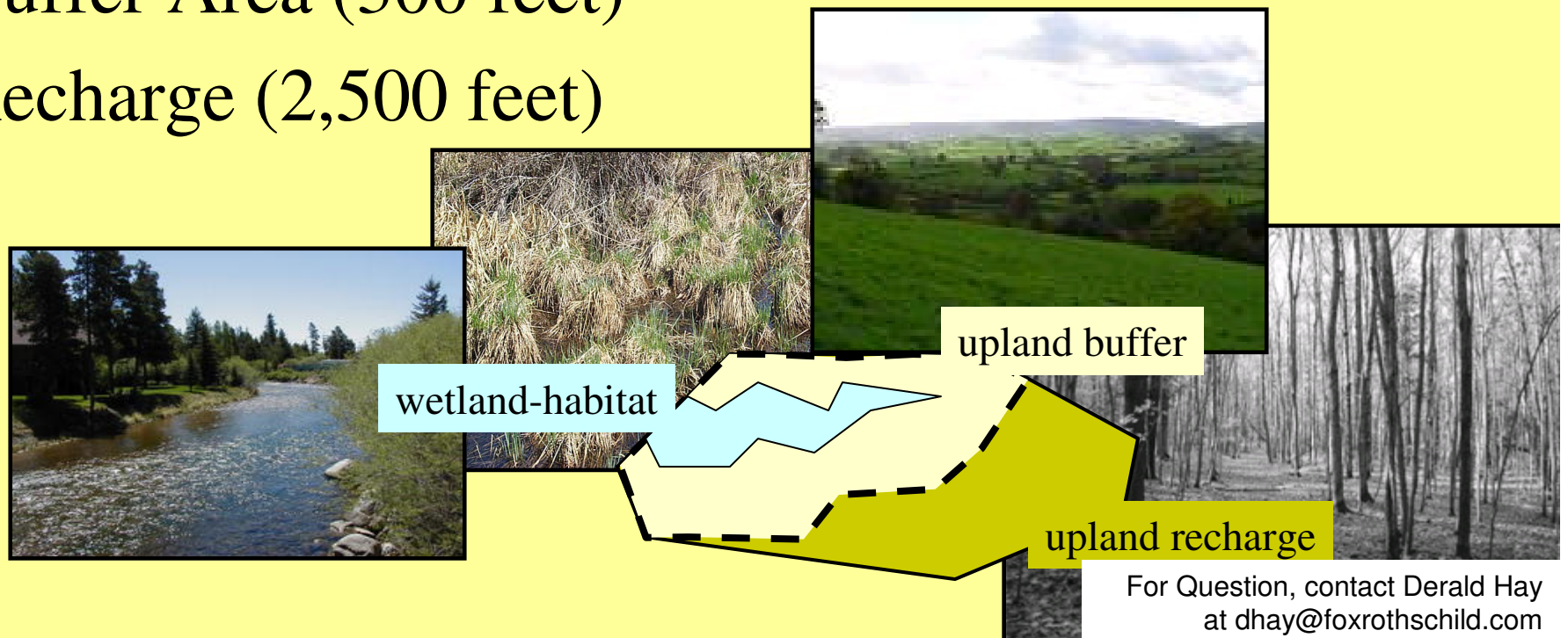


- Identity of the Purchaser
 - Individual Person
 - Business Enterprise
 - Developer
 - Non-Profit Organization

For Question, contact Derald Hay
at dhay@foxrothschild.com

Habitat Conservation Banking Credit Valuation

- Core Habitat (Wetlands)
- Buffer Area (300 feet)
- Recharge (2,500 feet)



For Question, contact Derald Hay
at dhay@foxrothschild.com

A blue heron is the central focus of the image, standing in a lush, green, grassy field. The heron's long neck is extended upwards, and its head is turned slightly to the right. The background is a soft-focus expanse of tall grasses, creating a natural and serene setting. The overall color palette is dominated by various shades of green, with the blue of the heron providing a strong contrast.

Habitat Conservation Banking Credit Valuation

- Factors Affecting Credit Ratio
 - Type of habitat (wetland, buffer, recharge)
 - Population characteristics (occupied, breeding)
 - Size of impact/preservation (acres)

For Question, contact Derald Hay
at dhay@foxrothschild.com